

The plans, ideas, arrangements, and designs indicated or represented by this drawing are owned by and are the property of BRIAN SHINAULT AIA, ARCHITECT, and in connection with this specific project, and shall not be used, in whole or in part, for any purpose for which they were not originally intended without written permission from BRIAN SHINAULT AIA ARCHITECT. © 2011

BRIAN SHINAULT AIA ARCHITECT expressly reserves the common law copyright and all other property rights in these plans, specifications, & ideas. These documents are not to be reproduced, changed, or copied in any form or manner whatsoever, nor are they to be assigned to any third party without obtaining written permission or consent of BRIAN SHINAULT AIA ARCHITECT.

BRIAN SHINAULT AIA ARCHITECT

ARIZONA 88002
 CALIFORNIA C-13916
 HAWAII AS-10055
 NEVADA 3018
 VIRGINIA 012702

976 EDGEWOOD CI
 SOUTH LAKE TAHOE,
 CALIFORNIA 96150
 530 541-5116
 530 544-1233 FAX
 WWW.BSATAHOE.COM

REVISION:

NEW MULTIHOME DEVELOPMENT FOR:
SIERRA COLINA VILLAGE
 LAKE VILLAGE DRIVE
 STATELINE, NV
 DOUGLAS COUNTY
 APN #: 1318-23-301-001

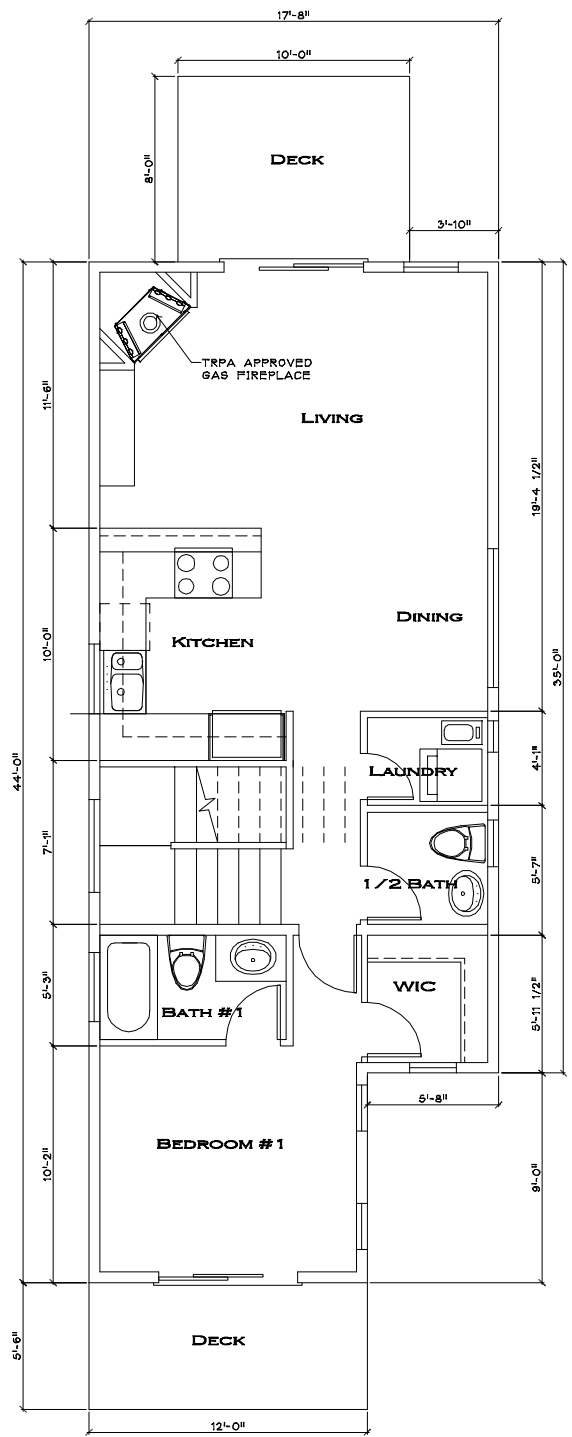
BUILDING #'S:
 24

JOB No: 132
 DRAWN BY: BC
 CHECKED BY: BE
 DATE PREPARED: DA1
 SCALE: AS NOTE
 FILE:

DRAWING No:

2SS-1

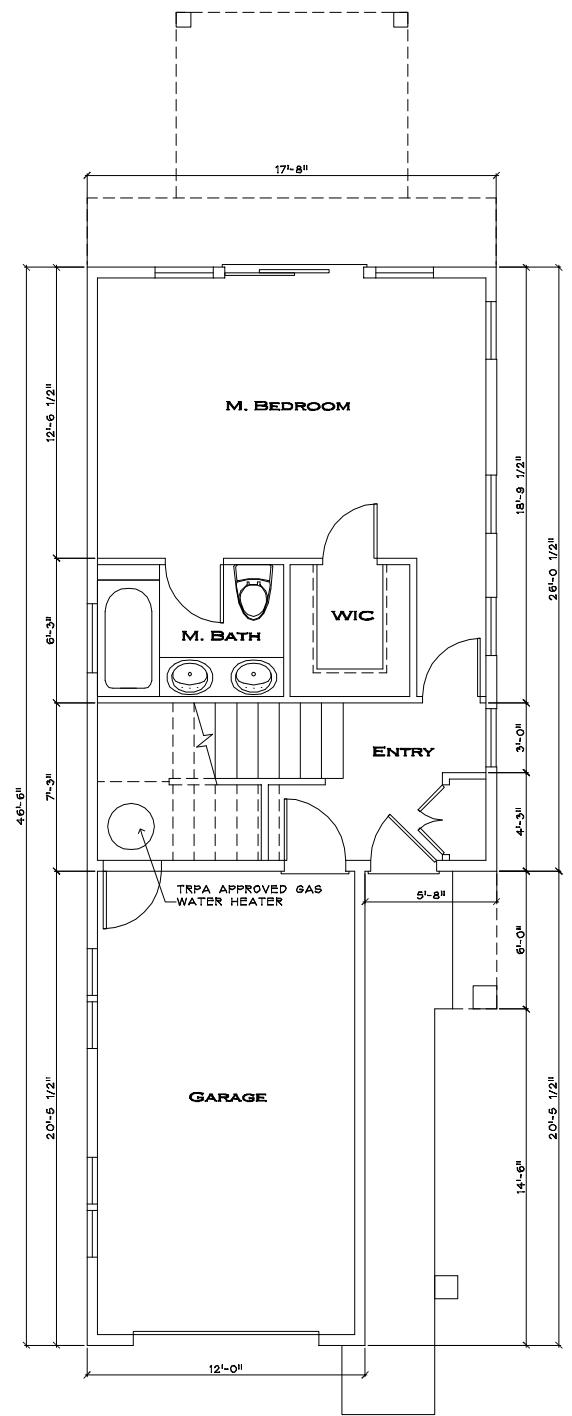
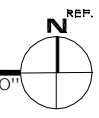
27 of 57 Sheets



Unit Area:

First Floor:	460 sf
Second Floor:	668 sf
Living Total:	1,128 sf
Garage:	245 sf
Unit Total:	1,373 sf
Bldg Total:	1,373 sf

SECOND FLOOR PLAN
 SCALE: 1/4" = 1'-0"



FIRST FLOOR PLAN
 SCALE: 1/4" = 1'-0"



2 BEDROOM
 STANDARD SINGLE (2SS)
 1 BUILDING
 1 HOME

(REVISED) TRPA SUBMITTAL - 9/5/06
 MULTI-FAMILY DWELLING FILE NO. 2006-0599
 LINEAR PUBLIC FACILITY FILE NO. 2006-0598
 SUBMISSION FILE NO. 2006-0591